

---

# Principles of Primary care Physician practice

— Adam Górecki-Gomoła MD —

---

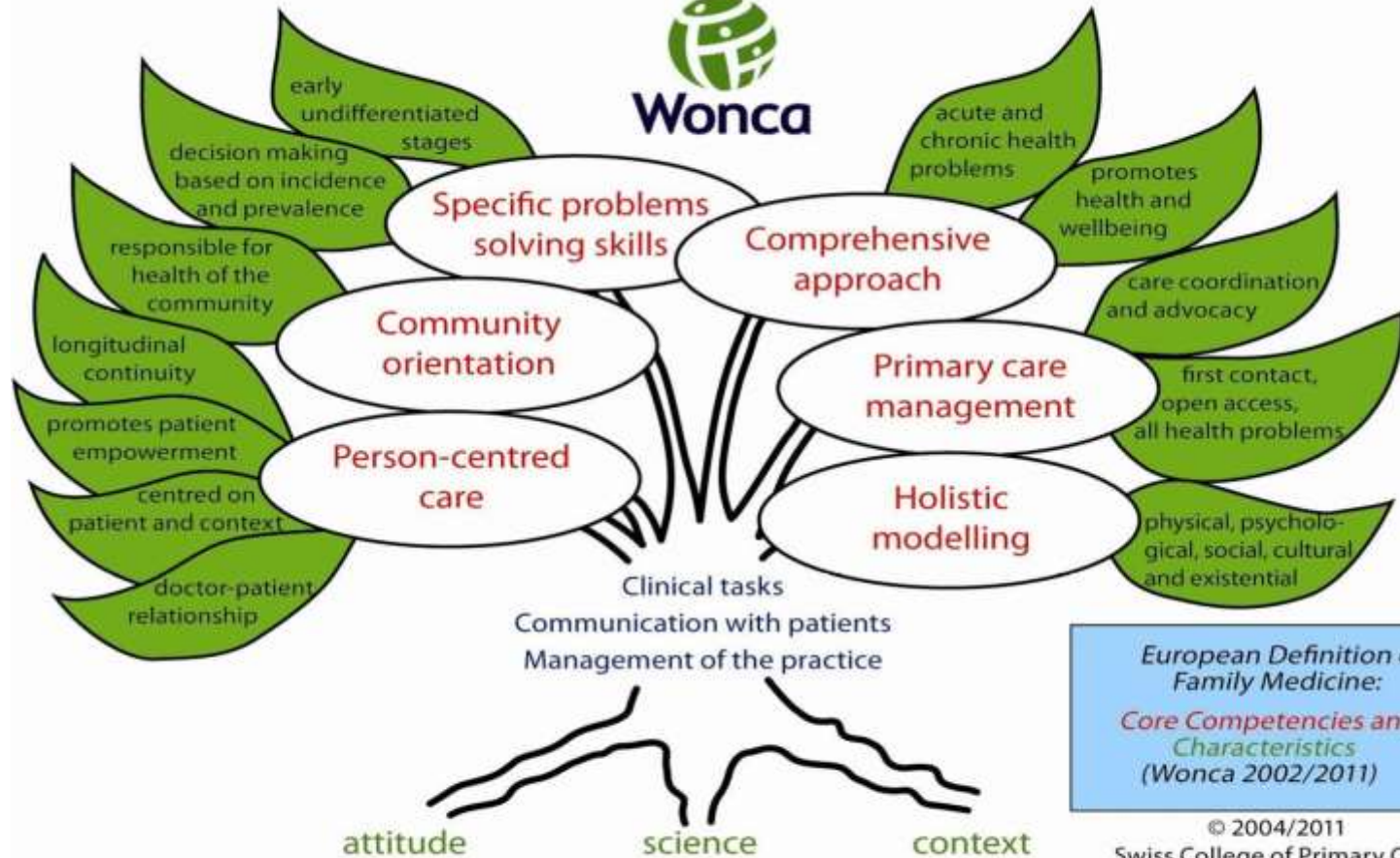
## What is WONCA's mission?

The Mission of WONCA is to improve the quality of life of the peoples of the world through defining and promoting its values, including respect for universal human rights and including gender equity, and by fostering high standards of care in general practice/family medicine by:

1. Promoting personal, comprehensive and continuing care for the individual and the family in the context of the community and society;
2. Promoting equity through the equitable treatment, inclusion and meaningful advancement of all groups of people, particularly women and girls, in the context of all health care and other societal initiatives;
3. Encouraging and supporting the development of academic organizations of general practitioners/family physicians;
4. Providing a forum for exchange of knowledge and information between Member Organizations and between general practitioners/family physicians; and
5. Representing the policies and the educational, research and service provision activities of general practitioners/family physicians to other world organizations and forums concerned with health and medical care

# Who is primary care physician/general practitioner:

1. Diagnostician and Therapist - provides holistic, continuous and comprehensive care using all options offered by the health care system
2. Decision-maker -makes clinical decisions based on the EMB data, taking into account the perspective of the patient and his family
3. Promoter-systematically works to improve the state of the
4. health of the individual as well as the population gathered in the active patient list
5. Leader- initiates and leads health programs and profilaxis projects
6. Manager-Collaborates harmoniously with individuals as well as institutions and organizations in assessing needs and using resources effectively
7. Coordinator and supervisor of ICP ( Individual health Care Plan)



*European Definition of  
Family Medicine:  
Core Competencies and  
Characteristics  
(Wonca 2002/2011)*

© 2004/2011  
Swiss College of Primary Care  
Medicine / U. Grueninger  
[www.kollegium.ch](http://www.kollegium.ch)

# European definition of Primary Care Practice, 12 features:

1. A place for the patient's first and unrestricted contact with the health care system, regardless of age, gender and type of problems
2. A conduct to implement health care through coordination and cooperation with other specialist
3. Person-centered care for the patient his family and community
4. Support center for the patient to stay healthy
5. Practice based on a unique way of consultation through effective communication and a long-term relationship between doctor and patient
6. Providing long-term continuity of care , determined by the needs of the patient

# European definition of Primary Care Practice, 12 features:

7. It is characterized by a specific way of decision-making resulting from the epidemiological conditions of the local community
8. Dealing with acute illnesses and chronic illnesses of the patient simultaneously
9. Dealing with undifferentiated conditions at an early stage that may require urgent intervention
10. Promotes health and well-being through appropriate and effective interventions
11. Takes specific responsibility for the community's drive
12. Addresses problems in their physical, psychological, social, cultural dimensions (holism)